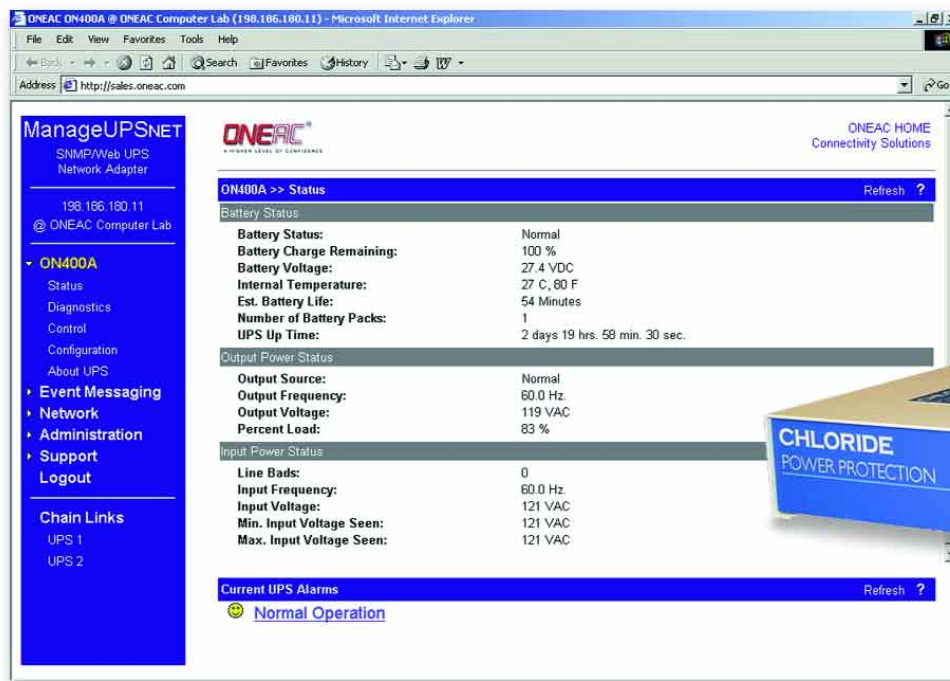


ManageUPS®NET Adapter: The ManageUPSNET Adapter provides an open approach to management of network power. ManageUPS delivers a complete set of manageability options including WEB, Telnet, and Out-Of-Band accessibility in addition to the full featured embedded SNMP agent. Event messages are reported through email as well as SNMP Traps. ManageUPSNET is a truly versatile tool for managing UPS systems in a network environment.

Network Shutdown & Remote Management



Key Features

Remote messaging

ManageUPS keeps you informed anywhere – fault and recovery messages are sent via SNMP Trap or email. Email contents include URL link for quick access to UPS web page. Many pager systems will forward email to a wireless pager so you can be informed anywhere.

Remote management: in-band

Site power and UPS status information can be accessed securely from any computer on your IP-based network. View UPS system status in real time for situational decision support. Easily accessible via Telnet, SNMP NMS or WEB Browser. SNMP Agent conforms to RFC1628 standard UPS MIB.

Security

Telnet, WEB, FTP and SNMP servers can be Individually disabled. SNMP server allows IP filtering and Communities to restrict access. WEB, Telnet and FTP servers have username and password access control. WEB server uses basic HTTP authentication.

Serviceability

FTP/FTP Server allows firmware or configuration files to be updated over the network for simpler maintenance.

BootP enabled

ManageUPS is BootP enabled which allows for simple network configuration.

Remote management: out-of-band

CONSOLE session support provides remote access via modem or terminal server to your network adapter.

Network shutdown

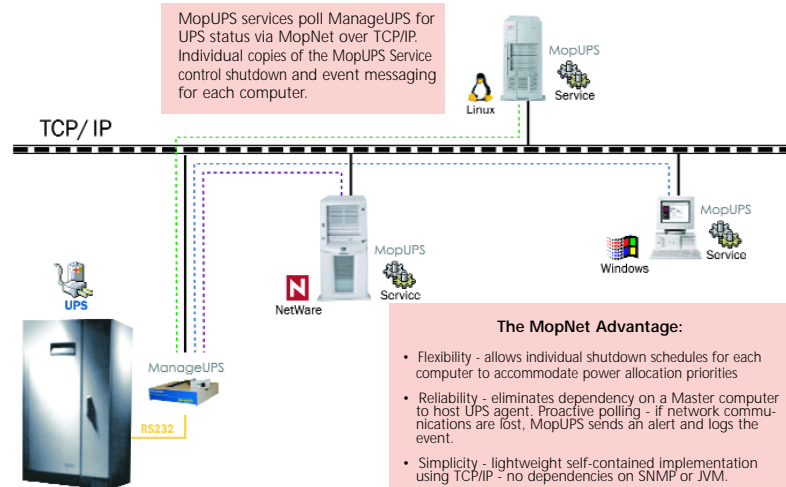
An embedded MopNET server allows MopUPS® shutdown software to monitor UPS status over a TCP/IP network.

ManageUPSNET Adapter: Specifications

Network Shutdown & Remote Management

ManageUPSNET enables remote management via SNMP, Telnet or WEB. Fault messages are delivered as SNMP Traps or in e:mail format. ManageUPS also includes a MopNet server that provides UPS status information to MopUPS – enabling safe, reliable network-based shutdown of multiple computers sharing a common UPS.

Flexible Schedule Shutdown via MopNet:



System Requirements

- SNMP Agent and MIB are compliant with SNMP v1 NMS.
- WEB Server compatible with Netscape or Internet Wxplorer 3.0 and higher.
- Network SMTP server required for email messaging.
- Network connection requires 10Base-T TCP/IP ethernet connection.
- Optional BootP configuration requires BootP Server.

Part Number	AK-MUN-O	AK-MUN2-O	AK-MUN2-O2	AK-MUN-EE
UPS Compatibility	ON Series®	ON Series Universal Mount*	Sinergy® Series	EDP Series
Cable type	NA	NA	NA	RS 232 (9-pin)
Shipping weight — lbs. (kg)	0.70 (0.32)	0.70 (0.32)	0.70 (0.32)	4.9 (2.22)
Net weight— lbs. (kg.)	0.45 (0.20)	0.45 (0.20)	0.45 (0.20)	4.6 (2.09)

* ON Series Universal Mount part numbers contain "XAU" or "XIU."

ONEAC, ON Series, ManageUPS, MopUPS and Sinergy are registered trademarks of ONEAC. All other trademarks, product and corporate names are the property of their respective owners.

ONEAC is a UL/BSI registered corporation — Certification No. A2900



A CHLORIDE POWER PROTECTION COMPANY

(800) 327 8801 OPT. 2 in USA AND CANADA

27944 N. Bradley Road, Libertyville, IL 60048 Phone 847 816-6000 FAX 847 680-5124

+44 (0) 2380 610311 in UK AND EUROPE

George Curl Way, Southampton, Hampshire SO18 2RY, UK FAX +44 0 2380 612039